

# Dreamgirl<sup>®</sup>



正規販売代理店

**Lady Cat**

by Cat Fish Club

<http://www.ladycat.com>

[service@ladycat.com](mailto:service@ladycat.com)

TEL 0798-31-7830

2024/2025 Fall / Holiday / Valentine's Collection





Style 13497  
Style 13493 on cover



New



- Rhinestone embellished, bias cut satin teddy
- Plunging neckline with adjustable halter strap
- Elastic waist with adjustable ribbon side ties
- Open back with G-string

**13497**

S, M, L, XL  
Twilight



New



**13492**

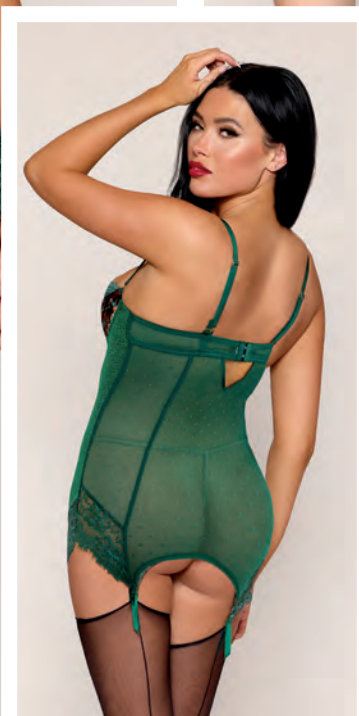
S, M, L, XL  
Twilight

- Velvet venise appliqué with metallic silver details, bustier and matching G-string
- Front boning support with stretch mesh back
- Rhinestone detail, adjustable shoulder straps and hook & eye back closure





New



- Printed stretch velvet garter slip with dot mesh and lace trim
- Underwire, lightly padded half cups with scallop eyelash lace neckline
- Hook & eye back closure with adjustable shoulder straps
- Garter shaped hem with attached garters
- Shown with Style 0492/0492X thigh highs; sold separately
- G-string not included

**13487,13487X**

S, M, L, XL, 1X, 2X, 3X  
Ivy







STYLE 13490



New



- Scallop sequin embroidery teddy and stretch velvet garter belt
- Halter neck teddy with plunging neckline and clear elastic bust support
- Adjustable halter ties and stretch mesh back with G-string
- Separate stretch velvet garter belt with hook & eye back closure and adjustable garters
- Shown with Style 0492 thigh highs; sold separately

13490

S, M, L, XL  
Ivy







STYLE 13482





- 3-piece eyelash lace set with bra, wide garter belt and G-string
- Underwire longline bra features decorative rhinestone buttons, adjustable/removable elastic straps and hook & eye back closure
- Eyelash lace garter belt with sparkly rhinestone buttons and adjustable garters
- Matching lace G-string
- Shown with Style 0432 thigh highs; sold separately

**13482**

S, M, L, XL  
Black





New



**13484**

S, M, L, XL  
Black

- Velvet and non-stretch mesh babydoll and G-string set
- Babydoll with foam lined cups, rhinestone connector, empire waistline and tiered skirt
- Removable/adjustable velvet shoulder straps and hook & eye back closure
- Matching mesh G-string





New



- Velvet and non-stretch mesh short bustier and G-string set
- Boned bustier with foam lined cups, rhinestone details, velvet bow, adjustable velvet shoulder straps, removable/adjustable velvet garters and hook & eye back closure
- Matching velvet G-string
- Shown with Style 0492/0492X thigh highs; sold separately

**13485, 13485X**

S, M, L, XL, 1X, 2X, 3X  
Black



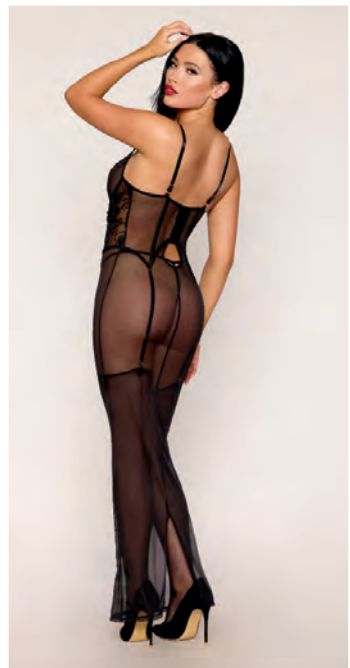




STYLE 13498



New



- Stretch mesh gown with sequin embroidery waist corset detail and matching G-string
- Underwire cups with heat-sealed neckline and gold rhinestone strap detail
- Fully boned bodice with hook & eye back closure and adjustable shoulder straps
- Removable/adjustable garter straps attached under the skirt; wear with or without garters and stockings
- Shown with Style 0492/0492X thigh highs; sold separately

**13498, 13498X**

S, M, L, XL, 1X, 2X, 3X  
Black







STYLE 13493





- Stretch lace and ultra sheer nude mesh garter slip and G-string with snag-free rhinestone seaming details
- Underwire cups with adjustable straps and hook & eye back closure
- Garter shaped hem with attached garter clips
- Shown with Style 0192 thigh highs; sold separately

**13493**  
S, M, L, XL  
Ox Blood



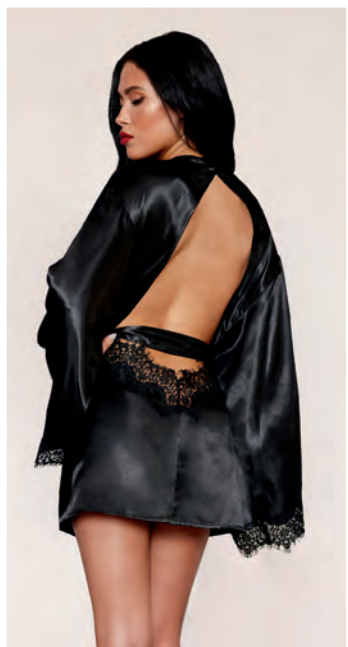




STYLE 13416



New



- Open back satin robe with eyelash lace trim and wide sleeves
- Robe features wide satin belt

**13416** **13416X**

S, M, L, XL  
Black, Ox Blood

1X, 2X  
Black





New



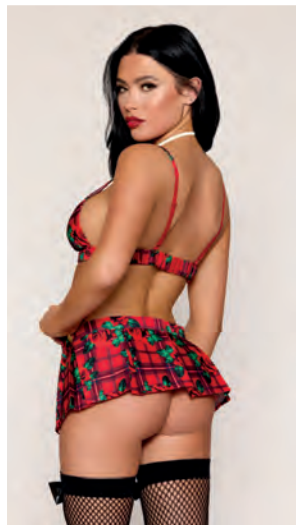
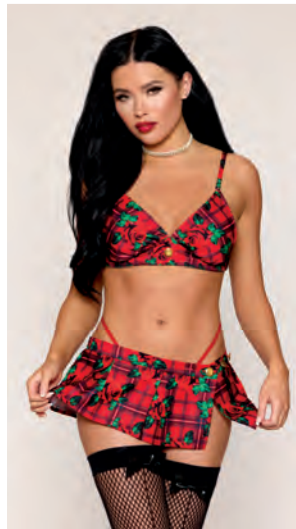
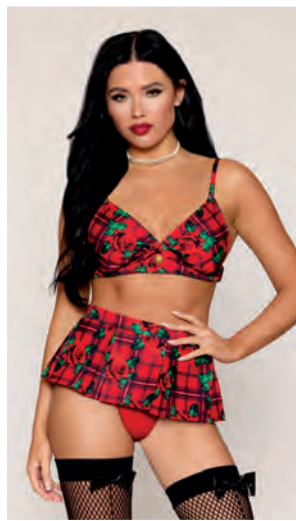
**13483, 13483X**

S, M, L, XL, 1X, 2X, 3X  
Poinsettia

- Eyelash lace with stretch mesh babydoll and G-string set
- Underwire cups with strappy neckline and sparkly rhinestone button accent
- Mesh cap sleeves adjustable on the back and hook & eye back closure
- Matching eyelash lace G-string







- Rose and plaid printed poplin bralette and mini skirt set with gold button details
- Triangle soft cups with adjustable shoulder straps and hook & eye back closure
- Box pleated mini skirt with adjustable button waistband
- Skirt has 3 different adjustments to wear at high-waist, low-waist, or low hips
- G-string and choker not included
- Shown with Style 0365/0192X thigh highs; sold separately

**13532, 13532X**

S, M, L, XL, 1X, 2X, 3X  
Poinsettia







STYLES 13508X & 13518



New



- Velvet and stretch mesh Santa teddy
- Boned velvet bodice, removable marabou trim, removable/adjustable velvet halter strap and hook & eye closure on the back
- Black velvet belt with rhinestone buckle and velvet stretch garters
- Shown with Style 0215 thigh highs; sold separately

**13508, 13508X**

S, M, L, XL, 1X, 2X, 3X  
Poinsettia







STYLE 13499X



New



- Stretch mesh with velvet trim garter slip and G-string set
- Garter slip features rhinestone heart details, velvet “lace-up” back and adjustable straps
- Matching mesh G-string with velvet trims
- Shown with Style 0005/0005X thigh highs; sold separately

**13499, 13499X**

S, M, L, XL, 1X, 2X, 3X  
Poinsettia







STYLE 13501



New



- Stretch lace and nude mesh high cut teddy
- Underwire foam lined demi cups with a crisscross stretch lace neckline
- Iridescent, removable/adjustable rhinestone crystal shoulder straps
- Hook & eye back closure

**13501**

S, M, L, XL  
Rose Quartz



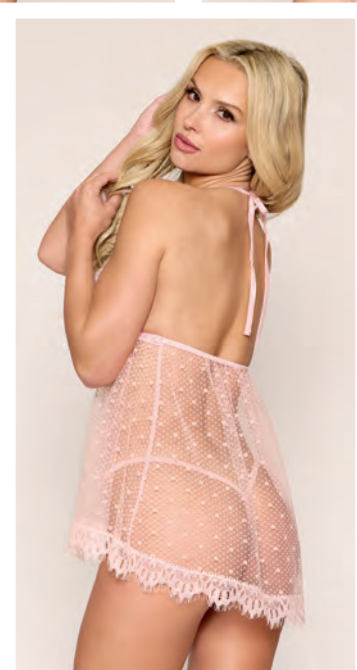




STYLES 13502X & 13525



New



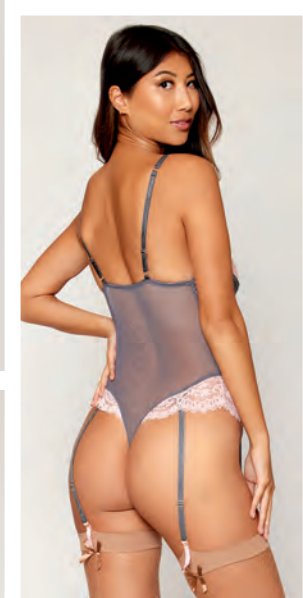
- Eyelash lace and flocked hearts & dots mesh babydoll with matching G-string
- Soft cups with adjustable halter neck and rhinestone crystal underbust trim detail
- Flyaway front skirt with a high-low, lace trim hem

**13502, 13502X**

S, M, L, XL, 1X, 2X, 3X  
Rose Quartz







## 13220, 13220X

S, M, L, XL, 1X, 2X, 3X  
Charcoal

- Stretch satin, mesh, and eyelash lace garter teddy with quilting details
- Underwire lace cups with half cup overlay and double straps with adjustable back
- Functional front lace-up bodice, snap crotch, and removable/adjustable garters
- Shown with Style 0192/0492X thigh highs; sold separately



## 13240

S, M, L, XL  
Rose Quartz

- Vintage rose embroidery mesh with satin babydoll and G-string set
- Adjustable straps and hook & eye closure
- Matching G-string







- Stretch lace halter teddy and separate chainmail garter belt
- Plunging neckline with chainmail halter neck detail and adjustable chain & clasp back closure
- Low, open, thong back with adjustable waist elastic strap
- Garter belt has front garters and adjustable chain & clasp back closure
- Shown with Style 0192 thigh highs; sold separately

**13217**

S, M, L, XL  
Beet



- Stretch lace bralette and matching thong set
  - Wide chainmail strap details on shoulder and hips
  - Adjustable back shoulder straps and hook & eye back closure
- 13216**  
S, M, L, XL  
Beet



- Iridescent pink chainmail halter bralette
- Adjustable chain & clasp back closures
- Denim panty not included

**13316**

S/M, L/XL  
Rose Quartz







**12769, 12769X**

S, M, L, XL, 1X, 2X, 3X  
Burgundy



- Novelty stretch mesh and delicate venise embroidery babydoll and matching G-string set
- Triangle soft cups with adjustable halter T-back strap
- Flyaway, open back skirt

**13231**

S, M, L, XL  
Red Rose



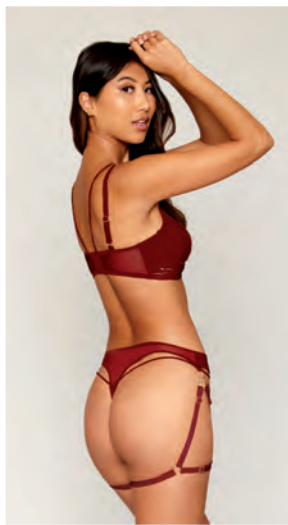
- Rose printed, stretch mesh bustier and matching mini skirt with contrast leopard print elastic details and stretch lace trim
- Fully-boned bustier, strapless neckline, and adjustable hook & eye back closure
- Skirt has elastic waist with button & loop closure, back keyhole, side slits, and lace trim
- Rosette choker necklace included
- G-string not included







- Vinyl push-up bra and garter thong set
- Deep plunge underwire push-up bra with spaghetti elastic details, gold metal D-ring eyelets, adjustable straps, and hook & eye back closure
- High hips thong with D-ring eyelets and spaghetti elastic
- Fully removable/adjustable leg garters



**13378**

S, M, L, XL  
Ox Blood



- Vinyl peplum bustier, collar, and G-string set
- Bustier features a functional front lace-up, boning for support, and removable/adjustable shoulder straps
- Collar has a front functional lace-up and Velcro closure on the back
- Matching G-string with fixed front lace-up

**13200, 13200X**

S, M, L, XL, 1X, 2X, 3X  
Ox Blood







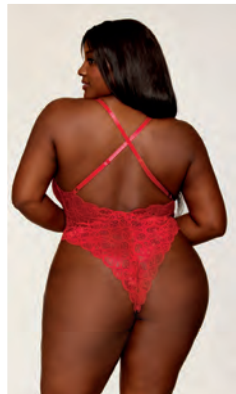
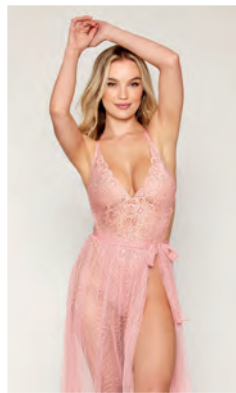
**10460, 10460X**

S, M, L, XL, 1X, 2X, 3X  
Garnet

- Lace halter gown with matching G-string
- Plunging neckline, high side slit, low back, scalloped-edge trim, and satin waist detail
- Adjustable tie-back closures







- Mosaic stretch lace teddy with sheer mesh, tie-front maxi skirt
- Open G-string back
- Adjustable crisscross straps
- Plus garment has been modified with a higher neckline and full lace back for additional coverage

**10996, 10996X**

S, M, L, XL, 1X, 2X, 3X  
Black, Rouge, Vintage Rose







## 12378, 12378X

S, M, L, XL, 1X, 2X, 3X  
Eggplant, Garnet



- Eyelash lace and stretch mesh babydoll with matching mesh G-string
- Rhinestone-studded, elastic strappy neckline and foam lined underwire lace cups
- Stretch mesh skirt with lace trim hem
- Adjustable shoulder straps with hook & eye back closure



## 11020, 11020X

S, M, L, XL, 1X, 2X, 3X  
Plum



- Stretch mesh and lace babydoll with matching G-string
- Underwire push-up cups
- Stretch satin with lace overlay detail
- Plus garment has been modified by removing the push-up cups





- Lace romper with eyelash lace trim
- Adjustable halter straps
- Open back with adjustable ribbon tie closure
- Flirty, high-cut leg with snap crotch
- G-string not included

**11815**

S, M, L, XL  
Eggplant



- Eyelash lace and stretch mesh babydoll and thong set with black cording accents
- Underwire cups with strappy neckline and gold ring details
- Adjustable shoulder straps with hook & eye back closure

**12467, 12467X**

S, M, L, XL, 1X, 2X, 3X  
Plum







**10102**

S, M, L, XL  
Midnight, Mulberry



**10102X**

1X, 2X, 3X  
Mulberry

- Delicate draped fringe chemise and matching mesh G-string
- Halter T-back with adjustable straps



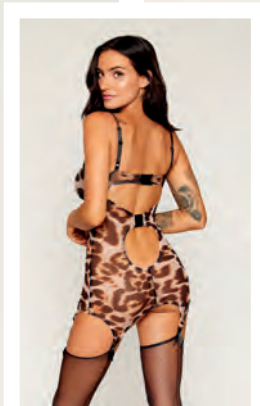
**13205, 13205X**

S, M, L, XL, 1X, 2X, 3X  
Black/Red



- Stretch mesh halter teddy with attached fingerless gloves and Shibari-inspired, "self-tie" body harness with tassels
- Halter neck with hook closure and adjustable back elastic
- Thong back teddy



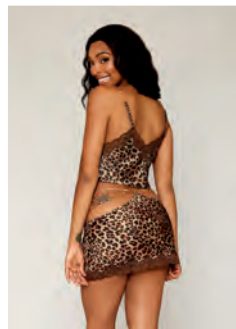
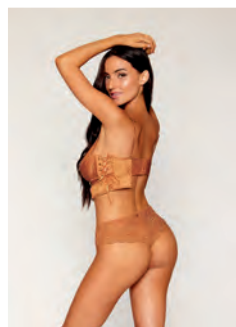


- Leopard printed, stretch mesh garter slip with rhinestone detailing and heat-sealed edges
- Floating underwire cups and bodice boning details
- Adjustable shoulder straps, hook & eye back closures, and attached garters
- Shown with Style 0492/0492X thigh highs; sold separately
- Thong not included

**13213, 13213X**

S, M, L, XL, 1X, 2X, 3X

Leopard



- Leopard printed, stretch satin camisole and mini skirt set with lace trim and disc chain accents
- Camisole has removable/adjustable disc chain shoulder straps
- Skirt has hip cutouts with removable/adjustable disc chain waist detail

**13214**

S, M, L, XL  
Leopard



- Stretch satin longline bra and G-string with pintucking and lace details
- Underwire lace cups with half cup overlay, adjustable shoulder straps, and mesh back with hook & eye back closure
- Side grommet detail with adjustable lace-up
- High-waisted lace G-string with matching front grommet lace-up detail

**13219**

S, M, L, XL  
Copper







**13224**

S, M, L, XL  
Denim



- Embroidery mesh underwire bra and strappy G-string set
- Bra features "V" wire center front, removable draping gold chains, and a removable silky tassel
- Adjustable shoulder straps and hook & eye back closure
- Matching strappy G-string

**13225**

S, M, L, XL  
Denim



- Embroidery mesh garter slip and G-string set
- Halter neck with back hook closure, removable front rhinestone connector, removable gold chains, and a removable silky tassel
- Adjustable back and matching embroidery mesh G-string
- Shown with Style 0492 thigh highs; sold separately



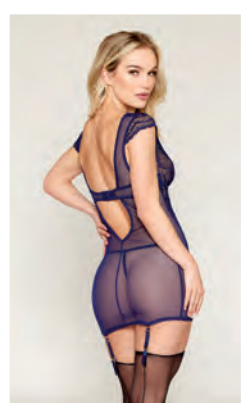
**12763, 12763X**

S, M, L, XL, 1X, 2X, 3X  
Nocturnal



- Leopard stretch mesh and fishnet garter teddy with fancy picot elastic trim and square gold hardware accents
- Underwire cups with adjustable shoulder straps and hook & eye back closure
- Attached waist corset detail with boning support, adjustable hook & eye back closure, and removable/adjustable garters
- Thong back with snap crotch
- Shown with Style 0338/0192X thigh highs; sold separately





- Stretch lace and mesh garter slip with matching G-string
- Cap sleeves, plunging neckline with exposed underwire detail, and open back with hook & eye closure
- Removable/adjustable garter straps
- Shown with Style 0492/0001X thigh highs; sold separately

**12426, 12426X**

S, M, L, XL, 1X, 2X, 3X  
Nocturnal



- Fishnet and lace flyaway front babydoll and G-string set
- Plunge bra neckline, molded, lined, underwire cups, and wide scalloped lace underbust detail
- Adjustable double-shoulder straps and hook & eye keyhole back closure
- Matching lace double strap G-string

**12430**

S, M, L, XL  
Nocturnal



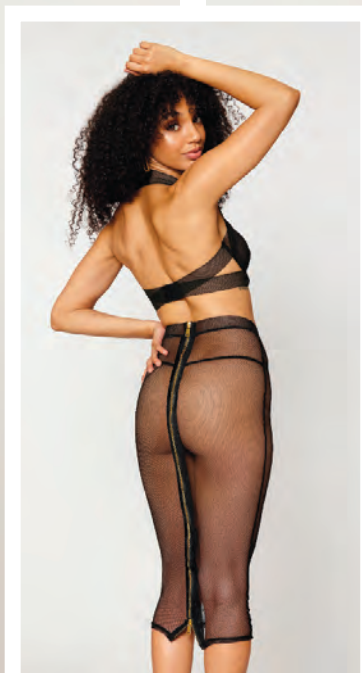
- Flocked cheetah print mesh garter slip and G-string set with O-ring strappy front detail
- Adjustable, crisscross double-shoulder straps, adjustable hook & eye keyhole back, and attached/adjustable garter straps
- Shown with Style 0492 thigh highs; sold separately

**12428**

S, M, L, XL  
Eggplant







**12770, 12770X**

S, M, L, XL, 1X, 2X, 3X  
Black

- Stretch fishnet bra and slip skirt set
- Underwire halter bra with adjustable hook & eye back closures and large, exposed metal "V" wire detail
- Matching midi-length slip skirt with 2-way gold metal zipper
- G-string not included



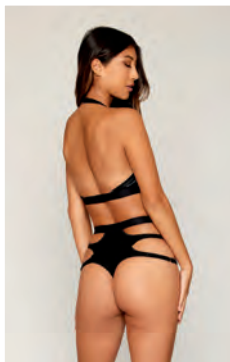




- Stretch lace and fishnet garter teddy
- Architectural shaped cups with boning support and large, exposed metal "V" wire detail
- Adjustable shoulder straps with matching "V" hardware detail, adjustable hook & eye back closure, adjustable back waist elastic, and removable/adjustable garters
- Shown with Style 0338 thigh highs; sold separately

**12765**

S, M, L, XL  
Black



- Stretch faux-leather and eyelash lace bralette and high-waisted panty set
- Bralette features strappy front details with gold O-ring accents, hook-neck closure, and hook & eye closure on the back
- High-waisted panty with front eyelash lace inserts and strappy side details with gold O-ring accents

**13197**

S, M, L, XL  
Black



- Eyelash lace halter teddy
- High tie-neck closure, eyelash lace framing, low back, and snap crotch

**11025**

XS, S, M, L, XL  
Black



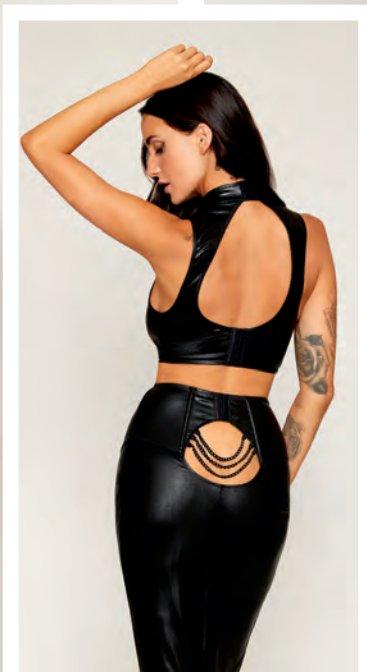
- Black rhinestone, stretch fishnet halter teddy with eyelash lace trim details
- Hook & eye back neck closure, adjustable back elastic strap
- Lace thong back

**12651**

S, M, L, XL  
Black







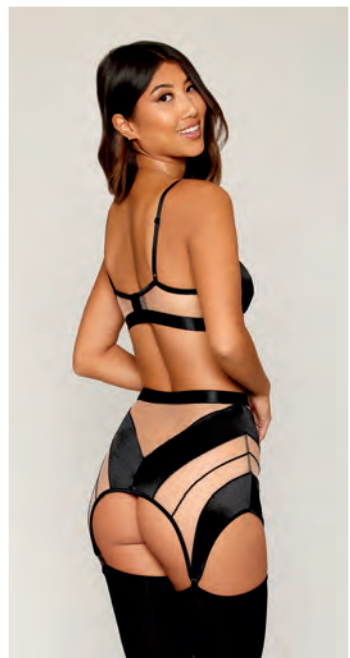
**13198, 13198X**

S, M, L, XL, 1X, 2X, 3X  
Black

- Stretch faux-leather harness bra and long slip skirt with black chain details
- Fully-boned, halter bra with black chain details and back keyhole with hook & eye closures
- Matching skirt has fully-boned waist corset, back keyhole opening with a multi-black chain details, and hook & eye closure







- Sheer panel garter slip
- High halter neck with hook & eye closure on the back
- Attached garter clips
- Shown with Style 0277 thigh highs; sold separately

**13376**

S, M, L, XL  
Black



- Foam cup bralette with nude mesh and strappy details, sheer panel garter skirt, and matching G-string
- Adjustable shoulder straps and hook & eye closure on the back
- Shown with Style 0277 thigh highs; sold separately

**13377, 13377X**

S, M, L, XL, 1X, 2X, 3X  
Black







**13251, 13251X**

S, M, L, XL, 1X, 2X, 3X  
Leopard/Rose

- Rose print chiffon, kimono style robe with leopard print satin binding and attached belt
- Leopard print satin teddy with open back and adjustable shoulder straps

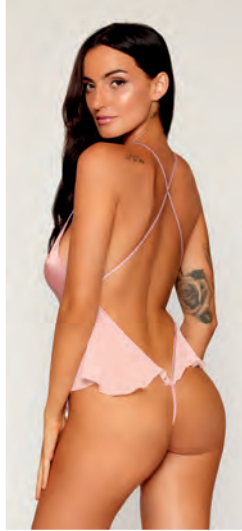


**12239, 12239X**

S, M, L, XL, 1X, 2X, 3X  
Black, Plum, Rouge

- 3-piece stretch mesh chemise, robe, and G-string set with scalloped lace trim
- U-back with back hook closure
- Adjustable straps





- Matte satin robe and teddy set
- Robe has attached belt and chiffon flounce hem details
- Teddy has open G-string back, adjustable crisscross straps and chiffon flounce hip details

**13249**

S, M, L, XL  
Rose Quartz



- Eyelash lace robe with wide border pattern on scallop hem
- Satin banding details and attached belt closure
- G-string not included

**12788, 12788X**

S, M, L, XL, 1X, 2X, 3X  
Burgundy





RED DIAMOND



STYLE 13514



New



- Stretch lace with delicate gold foil detail teddy
- Lace cup with ruching detail and gold rose pin
- Halter neckline and adjustable tie-back closures
- Stretch lace trim hip straps and G-string back

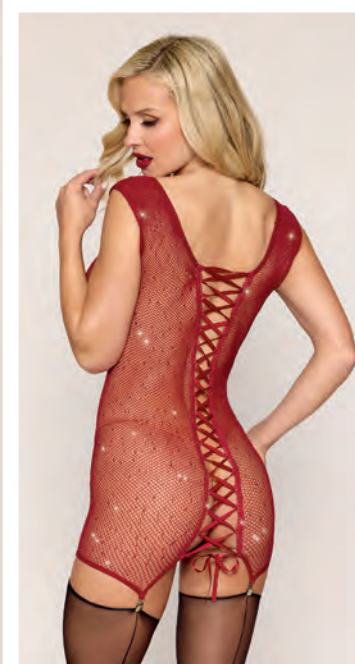
13514

O/S  
Ox Blood





New



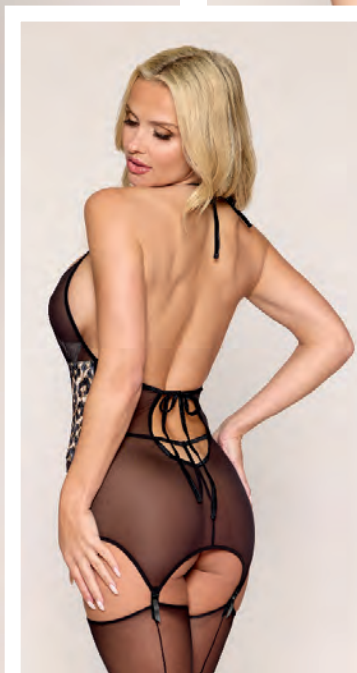
**13517, 13517X**

O/S, O/S Queen  
Ox Blood

- Seamless garter slip with iridescent red rhinestones, keyhole openings on the front with bows accents, satin ribbon lace-up back and mini suspender clips
- Shown with Style 0492/0492X thigh highs; sold separately
- G-string not included



New



- Stretch mesh garter slip and G-string
- Leopard printed velvet waist corset detail with adjustable wide ribbon lace-up
- Halter neck and adjustable back ties
- Garter shaped hem with attached garter clips
- Shown with Style 0492/0492X thigh highs; sold separately

**13520, 13520X**

O/S, O/S Queen  
Black







STYLE 13511



New



- Seamless floral lace pattern and opaque details teddy
- Front keyhole cutouts with O-ring accents
- Open back with removable sparkly chain décor

13511

O/S  
Black





New



**13522, 13522X**

O/S, O/S Queen  
Twilight

- Stretch two-tone lace garter bralette with halter ties and G-string set
- Triangle lace cups with cutouts
- Removable garters and back tie
- Matching lace G-string
- Shown with Style 0492/0492X thigh highs; sold separately





New



- Underwire open cup short sequin mesh bustier with matching G-string
- Halter tie and back ties
- Attached garters
- Shown with Style 0492 thigh highs; sold separately

13515

O/S  
Twilight







STYLE 13518



New



- Scallop stretch lace and ribbon bow garter slip and G-string set
- Wide satin ribbon, adjustable bow tie front detail
- Adjustable halter ties, adjustable back elastic straps and attached garter clips
- Shown with Style 0006/0006X thigh highs; sold separately
- Pasties not included

**13518, 13518X**

O/S, O/S Queen  
Poinsettia







B B B

STYLE 13524X



New



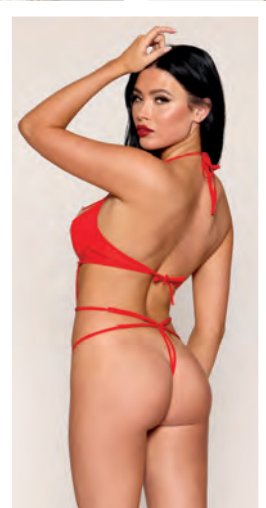
- Stretch lace and dot mesh babydoll and matching G-string
- Stretch lace bodice with halter straps and adjustable tie-back closures
- Dot mesh skirt with mesh godet details
- Matching lace G-string

**13524, 13524X**

O/S, O/S Queen  
Poinsettia







**13527**

O/S  
Poinsettia



- Strappy stretch mesh halter teddy with wireless foam cups
- Open-crotch teddy with rhinestone heart appliques, back ties, adjustable straps and G-string back





- Heart patterned seamless garter slip with rhinestone heart details
- Adjustable halter ties
- Cutout details
- Attached garter clips
- Shown with Style 0007 thigh high; sold separately
- G-string not included

**13523**

O/S  
Poinsettia







STYLE 13525



New



- Delicate lace teddy with dot mesh flounce details
- Halter neck with plunging neckline and LOVE charm detail
- Adjustable tie-back closures
- Thong back with hip flounce detail

13525, 13525X

O/S, O/S Queen  
Rose Quartz



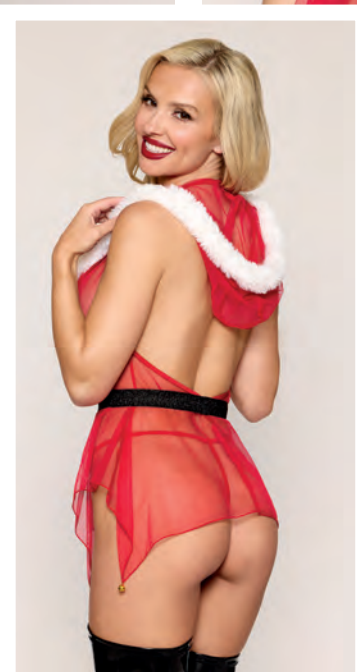




STYLE 13530



New



- Santa-themed mesh babydoll, belt and G-string set
- Halter neckline with faux-fur trimmed hood and open back
- Elastic supported cups and waist
- Handkerchief hem with bell trims
- Separate elastic belt with faux-rhinestone buckle detail

13530, 13530X

O/S, O/S Queen  
"North Pole Hottie"





# BLACK DIAMOND



STYLE 0511





- Seamless fishnet bodystocking with opaque knitted collar, bra and high-waisted panty
- Rhinestone embellished collar and bikini detail
- Button & loop collar closure
- Elastic toe strap detail

0511

O/S  
Black







STYLE 0512





- Seamless bodystocking, long-sleeved lace gown with all-over rhinestone embellishment
- Turtleneck design with cutout neckline detail, low, open back and attached G-string straps with rhinestone gold ring detail
- Nude G-string not included

**0512**

O/S  
Twilight





New



**0487, 0487X**

O/S, O/S Queen  
Ox Blood



- Seamless bodystocking lace gown with fishnet waist corset inset
- Rhinestone embellished corset seaming details
- Halter ties and keyhole open back
- Fit-and-flare fishnet hem
- Shown with Style 1497 G-string; sold separately
- G-string not included





• Semi-sheer asymmetrical seamless bodystocking with fence net side detail

0514

O/S  
Black







STYLE 0509





- Fishnet catsuit bodystocking and matching shrug set covered with iridescent rhinestones
- Nude thong not included

**0509**

O/S  
Rose Quartz







**8694**

- Stretch lace halter teddy with large heart cutout back detail
- Plunging neckline and adjustable halter tie

O/S  
Black, Red



**10561**

O/S

Lipstick Red



- Scalloped, stretch galloon lace bustier with matching open-crotch G-string set
- Underwire open cups, adjustable shoulder straps, strappy back detail, and attached/adjustable garters
- Shown with Style 0492 thigh highs; sold separately



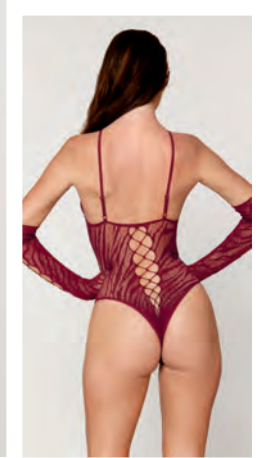
**10551**

O/S  
Garnet



- Stretch galloon lace teddy with peek-a-boo cutouts
- Unlined triangle cups with crisscross adjustable shoulder straps
- Open-crotch and G-string back

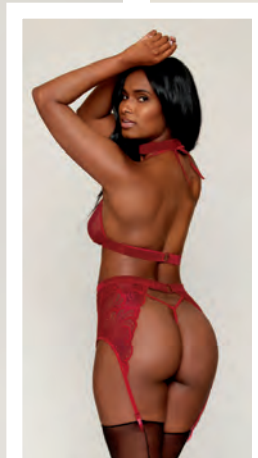




- Seamless zebra fishnet teddy and glove set
- High neck, front and back crisscross details, and adjustable shoulder straps
- Cheeky back fit
- Matching zebra fishnet opera length gloves with knitted fingers
- G-string not included

**12809, 12809X**

O/S, O/S Queen  
Burgundy



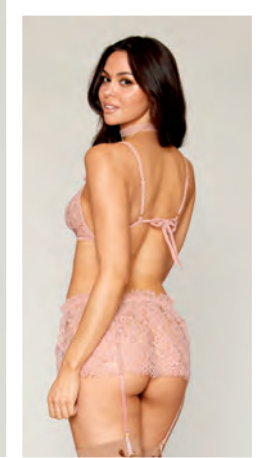
- 4-piece fishnet and lace choker, bralette, garter belt, and G-string set with stretch velvet trim
- Halter bralette with adjustable back closures
- Garter belt with attached/adjustable garters and adjustable waistband
- Matching fishnet G-string and velvet choker necklace
- Shown with Style 0492/0492X thigh highs; sold separately

**11776, 11776X**

O/S, O/S Queen  
Garnet





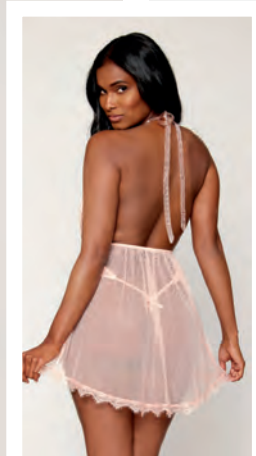
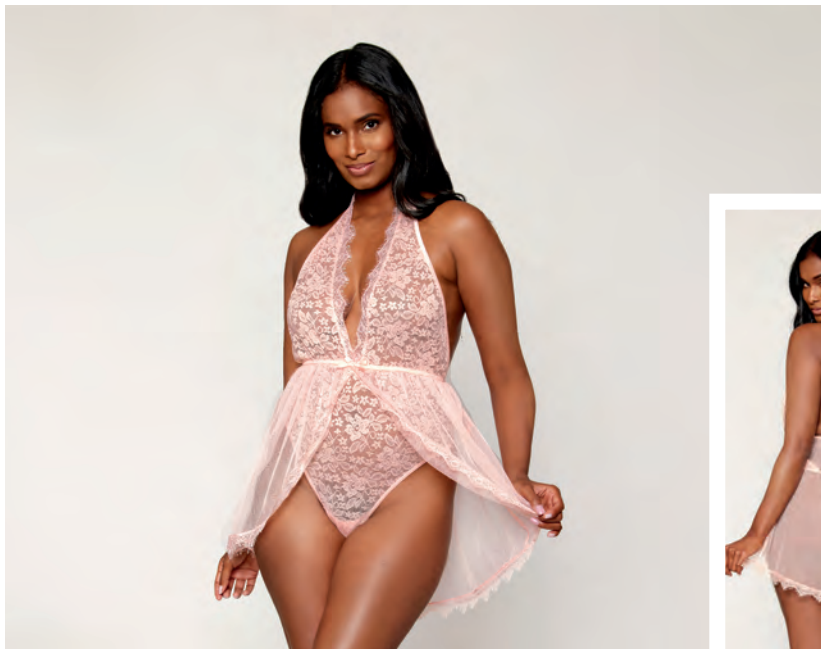


**13279, 13279X**

O/S, O/S Queen  
Rose Quartz



- Delicate eyelash lace bralette, garter skirt, and choker set with satin rosettes and fishnet elastic trim
- Lace bralette with adjustable shoulder straps and tie-back closure
- Garter skirt with elastic waist and attached garters
- Matching fishnet elastic choker with hook & eye back closure included
- Shown with Style 0192/0192X thigh highs; sold separately
- Thong not included



**11513, 11513X**

O/S, O/S Queen  
Pink Champagne



- Halter plunge front stretch lace teddy with eyelash lace trim and attached flyaway high-lo skirt
- Organza ribbon tie at neck
- G-string back

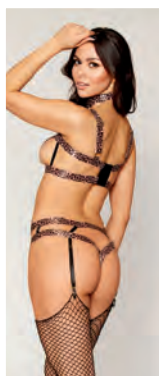




- Leopard printed, elastic bralette and G-string panty set
- Open cup detail with ring, adjustable straps, and hook & eye back closure
- Strappy G-string with attached/adjustable garters
- Matching choker collar with ring and hook & eye back closure included
- Shown with Style 0215 thigh highs; sold separately

**13286**

O/S  
Leopard



- Open cup bralette and open-crotch thong set with 3D flower appliqués and crystal beaded trim
- Underwire open cup with 3D flower appliqués, attached draping beaded trim, adjustable shoulder straps, and tie-back closure
- Open-crotch thong with 3D flower appliqué and attached draping beaded trim

**13285**

O/S  
Black



- Leopard printed, stretch lace teddy and chain garter belt harness set
- Triangle soft cups with a plunging neckline, clear elastic cup support, halter straps, and tie-back closures
- Open back with adjustable hip straps and G-string back
- Separate gold chain harness with tie-back closures and attached garters
- Shown with Style 0492 thigh highs; sold separately

**13267**

O/S  
Leopard



- Seamless swirl knit pattern teddy and elastic harness set
- Low scoop neck teddy with long sleeves, thumb holes, and thong back
- Separate elastic harness with ring details and hook & eye back closures
- Reversible; scoop can be worn in the front or in the back

**13266**

O/S  
Black





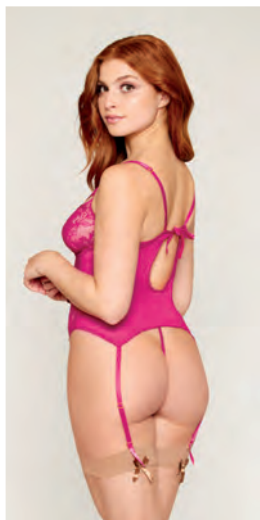
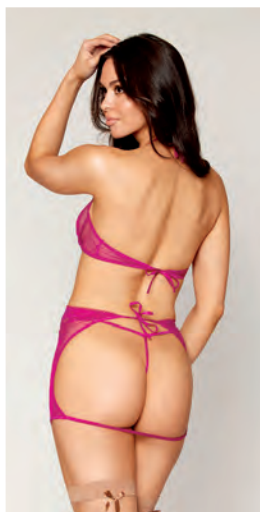


**13275**

O/S  
Beet



- Fishnet and scalloped lace trim garter slip and G-string set
- Underwire fishnet and lace cups with adjustable front, halter neck tie, and back tie closure
- Removable garter skirt with open back and back tie closure
- Matching G-string
- Shown with Style 0192 thigh highs; sold separately



**13283, 13283X**

O/S, O/S Queen  
Beet

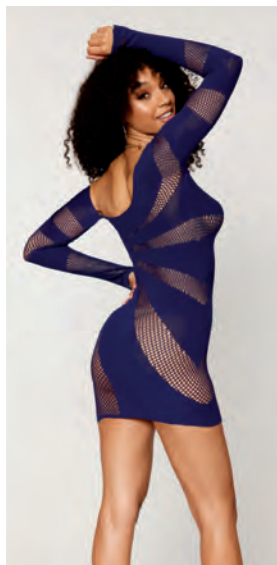


- Floral lace and mesh bustier and G-string set
- Wireless lace cups with strappy details and adjustable shoulder straps
- Adjustable garters and back keyhole with back tie closure
- Matching mesh and lace G-string
- Shown with Style 0192/0001X thigh highs; sold separately





- Geo lace with mesh bralette, garter skirt and G-string set
- Halter bralette with adjustable back closure
- Garter skirt with adjustable waistband and attached fixed garters
- Matching G-string
- Shown with Style 0492 thigh highs; sold separately



**13277**

O/S  
Denim



- Seamless long sleeve chemise with asymmetrical neckline
- Open fishnet and opaque stripes combination
- G-string not included

**12922, 12922X**

O/S, O/S Queen  
Nocturnal







**1492, 1492X**

S, M, L, XL, 1X, 2X, 3X  
Black



- Microfiber heart-back panty with fringe details
- Front mesh inset
- Open back with G-string



**1442, 1442X**

S, M, L, XL, 1X, 2X, 3X  
Black, Red, White



- Heart stretch lace panty
- Open-crotch
- Heart cutout detail



**1468, 1468X**

S, M, L, XL, 1X, 2X, 3X  
Black, Red



- Lace tanga open-crotch panty
- Elastic open back detail



**1377**

S, M, L, XL  
Hot Pink/Black, Red/Black



- Stretch mesh panty
- Lace ruffle trim
- Open back heart detail





- Stretch lace cheeky hipster panty
- Scalloped lace trim
- Satin bow

**1375**

S, M, L, XL  
Black, Hot Pink, Red,  
Turquoise



- High-waisted mesh and lace garter thong with satin ribbon back tie
- Removable/adjustable garters
- Lace side detail
- Shown with Style 0001/0007 thigh highs; sold separately

**1478**

S, M, L, XL  
Black, Ruby



- Stretch lace cheeky open-crotch thong
- Adjustable elastic waist with strappy back, chains, and ring details

**1489, 1489X**

S/M, L/XL, 1X/2X, 3X/4X  
Black



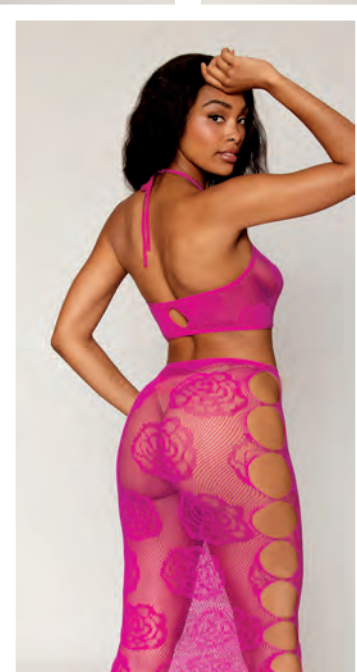
- Lace open-crotch G-string
- Rhinestone connector on back

**1497**

S/M, L/XL  
Beet







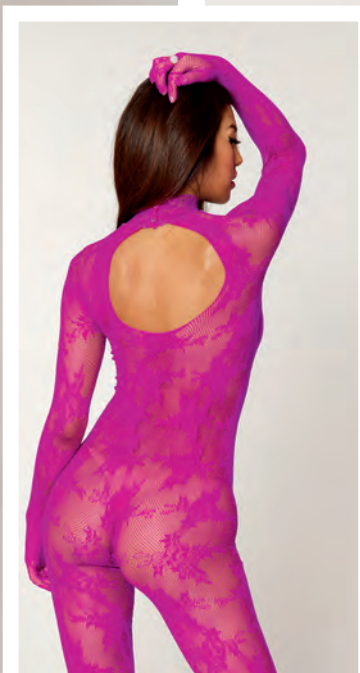
**0485, 0485X**

O/S, O/S Queen  
Beet

- Seamless bralette and long skirt set with knitted large rose and fishnet pattern
- Adjustable halter ties and keyhole details
- G-string not included







- Seamless, floral knitted fishnet catsuit bodystocking
- Long sleeves with built-in fingered gloves
- Stretch lace mock turtleneck with snap closure and open back detail
- Stirrup style foot opening
- G-string not included

**0416, 0416X**

O/S, O/S Queen  
Azalea





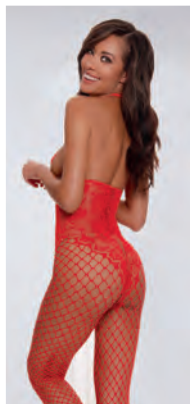


**0035, 0035X**

O/S, O/S Queen  
Black, Red



- Semi-sheer halter garter dress with stretch lace trim, attached garters, and matching thigh highs
- G-string not included



**0268**

O/S  
Black, Lipstick Red



**0268X**

O/S Queen  
Black

- Open cup bodystocking with knitted lace teddy illusion design
- Open-crotch with fishnet legs
- Adjustable halter
- Pasties and G-string not included





**0417**

O/S  
Burgundy



- Leopard fishnet catsuit bodystocking and matching shrug set
- Scoop neckline with shoulder straps and footless bodystocking
- Separate long-sleeve shrug with built-in fingered gloves
- Thong not included



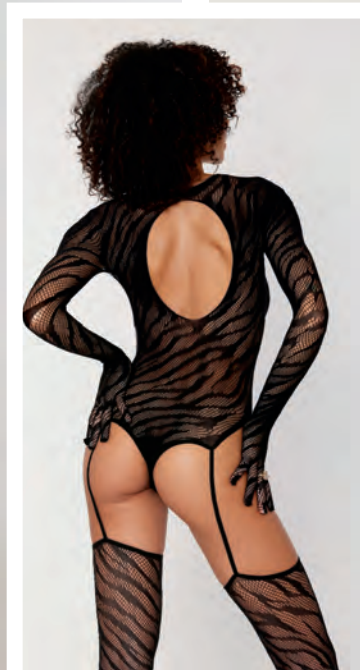
**0423**

O/S  
Black



- Zebra fishnet 2-piece strappy bodystocking set
- Long-sleeve bralette with built-in fingered gloves, mock-turtle neck, and cropped length design with ring and strap detail
- Matching zebra fishnet footless leggings with ring and elastic strap detail
- Thong not included





**0420, 0420X**

O/S, O/S Queen  
Black



- Zebra fishnet teddy bodystocking with long sleeves, built-in fingered gloves, and keyhole open back detail
- Thong back
- Attached garters and matching thigh high stockings





• Seamless bodystocking gown with shaped opaque front and back panels, novelty design sides, and removable gold halter chain

**0486, 0486X**

O/S, O/S Queen  
Denim







**0503**

O/S  
Espresso, Nude



- Very fine, silky sheer, "second skin" pantyhose with shaped foot design, invisible toe seam, and soft knitted waistband
- G-string not included



**0010**

O/S  
Black, Neon Pink



- Fence net pantyhose with elastic waistband
- G-string not included



**0496**

O/S  
Nude/Black



- Two-tone, knitted leopard pattern pantyhose with soft waistband
- G-string not included



**0436, 0436X**

O/S, O/S Queen  
Black



- Fishnet pantyhose with jacquard side detail and rhinestone embellishment
- Elastic waistband
- G-string not included





- Fence net pantyhose with solid knitted panty and thigh high design

**0367, 0367X**

O/S, O/S Queen  
Black



- Sheer, open-crotch pantyhose with elastic waistband

**0082, 0082X**

O/S, O/S Queen  
Black



- Semi-sheer suspender garter pantyhose
- Panty not included

**0250**

O/S  
Black



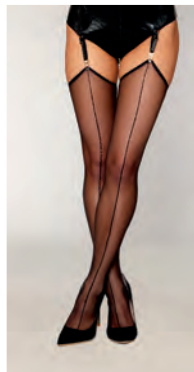
- Sheer garter pantyhose with a stretch lace garter belt and attached garters
- Panty not included

**0013, 0013X**

O/S, O/S Queen  
Black, Red, White







**0492, 0492X**

O/S, O/S Queen  
Black



- Very fine, silky sheer thigh highs with rolled hem top and back seam details
- Reversible; seams can be worn in the front or in the back
- Designed to be worn with garters, not included



**0433**

O/S  
Black



- Leopard pattern thigh highs with striped elastic top
- Garter belt not included



**0432, 0432X**

O/S, O/S Queen  
Leopard/Black



- Sheer thigh highs with stay-up silicone leopard print elastic top



**0347, 0347X**

O/S, O/S Queen  
Black



- Fishnet thigh high stockings with knitted leopard design and plain top
- Garter belt not included





- Cuban heel, sheer thigh high stockings
- Plain top with contrast back seam
- Garter belt not included

**0338**

O/S

Espresso/Black, Nude/Black, Nude/Hot Pink, Nude/White



- Sheer thigh highs with back seam
- Garter belt not included

**0007, 0007X**

O/S, O/S Queen

Black, Espresso, Hot Pink, Nude, Red, White







**0005, 0005X**

O/S, O/S Queen

Black, Espresso, Nude, Red, White



• Sheer thigh highs with stay-up silicone lace top



**0026**

O/S

Black/Red



• Sheer thigh highs with contrast, stay-up, silicone lace top, and satin bow detail



**0006, 0006X**

O/S, O/S Queen

Black, Red



• Fishnet thigh highs with lace top  
• Garter belt not included





- Fishnet thigh high stockings with back seam and small satin bow detail
- Garter belt not included

**0192, 0192X**

O/S, O/S Queen  
Black, Nude



- Raw edge top, diamond net thigh high stockings
- Designed to be worn with garters, not included

**0215**

O/S  
Black



- Fishnet thigh highs with back seam and stay-up silicone lace top

**0001, 0001X**

O/S, O/S Queen  
Black, Espresso, Nude, White







**0365, 0365X**

O/S, O/S Queen

Black



- Diamond net fishnet thigh highs with plain top, back seam, and vinyl bowtie accent



**0277**

O/S

Black



- Opaque, raw edge top, seamless thigh high stockings
- Designed to be worn with garters, not included



**0001N, 0001NX**

O/S, O/S Queen

Hot Pink



- Fishnet thigh highs with back seam and stay-up silicone lace top



**0005N, 0005NX**

O/S, O/S Queen

Neon Pink



- Sheer thigh highs with stay-up silicone lace top





• Fishnet pantyhose with back seam

**7034**

O/S  
Black



- Sheer thigh highs with back seam
- Garter belt not included

**7031**

O/S  
Black, Red, White



- Sheer thigh highs
- Stay-up silicone lace top

**7030, 7030X**

O/S, O/S Queen  
Black, White





# United States Sales Representatives and Showrooms

You can now order, check inventory and get status updates 24 hours a day, 7 days a week. Log into [www.dgorders.com](http://www.dgorders.com) today!

**Dreamgirl Corporate HQ**  
5548 Lindbergh Lane, Bell, CA 90201

**Customer Service**  
M-F 8am – 4:30pm PST  
[customerservice@dgbrands.com](mailto:customerservice@dgbrands.com)  
[www.dreamgirldirect.com/sales](http://www.dreamgirldirect.com/sales)

**US Customer Service Toll Free**  
Phone: +1 800-622-5686  
Fax: +1 800-625-7363

**National Sales Manager**  
**Gihan Gabor**  
Phone: +1 323-268-0220 x208  
[ggabor@dgbrands.com](mailto:ggabor@dgbrands.com)

**General Sales Inquiries**  
[sales@dgbrands.com](mailto:sales@dgbrands.com)

**International Customer Service**  
Phone: +1 323-268-0220  
Fax: +1 323-268-4913

# Dreamgirl®

## International Sales Representatives & Showrooms

### AFRICA

Algeria, Botswana, Ivory Coast, Kenya,  
Libya, Mauritius, Morocco, Nigeria,  
South Africa, Sudan, Tunisia,  
Zimbabwe  
Canadex International Trading  
5255 Henri Bourassa West, STE: 200  
St. Laurent, Quebec, CA H4R 2M6  
T: +1-514-337-0946  
F: +1-514-337-0857  
Mobile Canada: +1-514-578-0946  
[hk@canadaextrading.com](mailto:hk@canadaextrading.com)  
[www.canadaextrading.com](http://www.canadaextrading.com)  
Contact: Hrant (Harry) Kaprielian

### ASIA

Japan  
Big Fish Story, Inc.  
#404, 2-22, Jogabori-cho, Nishinomiya,  
Hyogo, 662-0856, Japan  
T: +81-798-31-7831  
[bigfish@bfinfo.com](mailto:bigfish@bfinfo.com)  
[www.bfinfo.com](http://www.bfinfo.com)  
[www.happycostume.com](http://www.happycostume.com)  
Contact: Masashi Shibata

Bahrain, Iran, Iraq, Israel,  
Jordan, Kuwait, Lebanon, Oman,  
Palestine, Qatar, Saudi Arabia, Syria,  
Turkey, U.A.E, Yemen

Canadex International Trading  
5255 Henri Bourassa West, STE: 200  
St. Laurent, Quebec, CA H4R 2M6  
T: +1-514-337-0946  
F: +1-514-337-0857  
Mobile Canada: +1-514-578-0946  
[hk@canadaextrading.com](mailto:hk@canadaextrading.com)  
[www.canadaextrading.com](http://www.canadaextrading.com)  
Contact: Hrant (Harry) Kaprielian

### AUSTRALIA

M Distribution Pty Ltd  
PO Box 444  
Mudgeeraba QLD  
Australia 4213  
P: +61 7 5522 1950  
[sales@metrointeractive.net.au](mailto:sales@metrointeractive.net.au)  
[www.metrointeractive.net.au](http://www.metrointeractive.net.au)

### NORTH AMERICA

Canada  
Jolar-Speck Inc.  
2154 Rue De La Province  
Longueuil, Quebec, CA J4G 1R7  
T: +1-450-674-5515 | +1-800-565-6527  
[caroline.joanisse@jolarspeck.com](mailto:caroline.joanisse@jolarspeck.com)  
[www.jolarspeck.com](http://www.jolarspeck.com)  
Contact: Caroline Joanisse

### EUROPE

Austria, Czech Republic, Germany,  
Italy, Netherlands, Poland,  
Romania, Slovenia, Switzerland  
Premium Bodywear AG  
Chemnitzer Str. 36-38  
09228 Chemnitz/Germany  
P: +49 37200 860 608  
F: +49 37200 860 699  
[dreamgirl@prebo.de](mailto:dreamgirl@prebo.de)  
Contact: Kathleen Richter

Denmark, Finland, Norway, Sweden  
Flirt Fashion AB  
Drottninggatan 110  
11360 Stockholm  
Sweden  
P: +46 832 6550  
[info@flirtfashion.se](mailto:info@flirtfashion.se)  
Contact: Wiggo Berggren

Belgium, France, Luxembourg, Malta  
DOMTOM  
CL Diffusion  
1 Rue Denis Papin  
37270 Montlouis-sur-Loire  
France  
T: 0033 247 52 83 56  
[www.commande-sexy.com](http://www.commande-sexy.com)  
Contact: Margo Herman, CEO

Cyprus, Greece  
Ana Co Group – A. Anagnostou & SIA OE  
a) Central Offices & Warehouse:  
459 STR. Korinthou  
Patras – Greece  
T: 0030 2610361610  
F: 0030 2610328688  
Email: [anaco@otenet.gr](mailto:anaco@otenet.gr)  
b) Showroom & Office:  
6 STR. Semitelou  
Athens – Greece  
T/F: 0030 2107470333  
[www.anacogroup.com](http://www.anacogroup.com)  
Contact: Elena Anagnostou

All European Countries  
Shots B.V  
Veesteeg 12, 6658 KP Beneden-  
Leeuwen, Netherlands  
T: +31 0 487 519 333  
[www.shots.nl](http://www.shots.nl)  
Contact: Maura Claes



# 2024/2025 FHV Collection Guide

You can now order, check inventory & get status updates 24 hours a day, 7 days a week. Log into [dorders.com](http://dorders.com) today!

## WOMEN'S UNITED STATES SIZE CHART

	XS	S	M	L	XL	S/M	M/L	L/XL	O/S	1X/2X	3X/4X	1X	2X	3X	O/S QUEEN
SIZE	0 - 2	2 - 6	6 - 10	10 - 14	14 - 16	2 - 8	8 - 14	14 - 16	2 - 14	16 - 20	22 - 24	16 - 18	20 - 22	24 - 26	16 - 22
CORSET SIZE		32	34	36	38							40	42	44	
CUP	A	A/B	B/C	C/D	D/E	A/B	B/C	C/D	B/C	D/DD	DD	D/DD	DD/DDD	DDD/F	D/DD
BUST	30" - 32"	32" - 34"	34" - 36"	36" - 38"	38" - 40"	32" - 34"	36" - 38"	38" - 40"	32" - 38"	40" - 46"	46" - 52"	44" - 46"	48" - 50"	52" - 54"	40" - 50"
WAIST	23" - 25"	25" - 27"	27" - 29"	29" - 31"	31" - 33"	25" - 27"	28" - 32"	31" - 33"	24" - 31"	36" - 42"	42" - 46"	38" - 40"	42" - 44"	46" - 48"	36" - 44"
HIP	32" - 34"	34" - 36"	36" - 38"	38" - 40"	40" - 42"	34" - 36"	38" - 40"	40" - 42"	34" - 40"	44" - 50"	50" - 54"	46" - 48"	50" - 52"	54" - 56"	42" - 52"
INSEAM	32"	32"	32"	32"	32"	32"	32"	32"	32"	32"	32"	32"	32"	32"	32"
RISE	6 ½" - 7"	7" - 7 ½"	7 ½" - 8"	8" - 8 ½"	8 ½" - 9"	7 ½" - 8"	8" - 8 ½"	8 ½" - 9"	7 ½" - 8"	9" - 9 ½"	10" - 10 ½"	9" - 9 ½"	10" - 10 ½"	11" - 11 ½"	9" - 10"
WEIGHT	85 - 90lb	90 - 120lb	120 - 140lb	140 - 160lb	160 - 180lb	90 - 130lb	130 - 160lb	160 - 180lb	90 - 160lb	165 - 220lb	220 - 265lb	180 - 220lb	220 - 260lb	260 - 300lb	180 - 260lb

## WOMEN'S INTERNATIONAL SIZE CHART

	XS	S	M	L	XL	S/M	M/L	L/XL	O/S	1X/2X	3X/4X	1X	2X	3X	O/S QUEEN
UK	0 - 2	6 - 8	10 - 12	14 - 16	16 - 18	6 - 10	12 - 16	16 - 18	6 - 16	18 - 22	24 - 26	18 - 20	22 - 24	26 - 28	18 - 24
FRANCE/SPAIN	32 - 34	34 - 36	38 - 40	42 - 44	44 - 46	34 - 38	40 - 44	44 - 46	33 - 44	46 - 50	52 - 54	46 - 48	50 - 52	54 - 56	46 - 52
GERMANY	30 - 32	32 - 34	36 - 38	40 - 42	42 - 44	32 - 36	38 - 42	42 - 44	32 - 42	44 - 48	50 - 52	44 - 46	48 - 50	52 - 54	44 - 50
ITALY	34 - 36	38 - 40	42 - 44	46 - 48	48 - 50	38 - 42	44 - 48	48 - 50	38 - 48	50 - 54	56 - 58	50 - 52	54 - 56	58 - 60	50 - 56
JAPAN	5	7 - 9	11 - 13	15 - 17	19 - 21	7 - 13	13 - 17	19 - 21	7 - 17	21 - 25	25 - 29	21 - 23	25 - 27	29 - 31	21 - 25
CUP	A	A/B	B/C	C/D	D/E	A/B	B/C	C/D	B/C	D/DD	DD	D/DD	DD/DDD	DDD/F	D/DD
US CORSET SIZE		32	34	36	38							40	42	44	
BUST	76 - 81cm	81 - 86cm	86 - 91cm	91 - 97cm	97 - 102cm	81 - 86cm	91 - 97cm	97 - 102cm	81 - 97cm	102 - 117cm	117 - 132cm	112 - 117cm	122 - 127cm	132 - 137cm	112 - 127cm
WAIST	54 - 64cm	64 - 69cm	69 - 74cm	74 - 79cm	79 - 84cm	61 - 66cm	71 - 81cm	79 - 84cm	61 - 86cm	91 - 107cm	107 - 117cm	96.5 - 101.5cm	107 - 112cm	117 - 122cm	91 - 112cm
HIP	81 - 86cm	86 - 91cm	91 - 97cm	97 - 102cm	101 - 107cm	86 - 91cm	97 - 102cm	101 - 107cm	91 - 102cm	112 - 127cm	127 - 137cm	117 - 122cm	127 - 132cm	137 - 142.5cm	107 - 135cm
INSEAM	81cm	81cm	81cm	81cm	81cm	81cm	81cm	81cm	81cm	81cm	81cm	81cm	81cm	81cm	81cm
RISE	16 - 18cm	18 - 19cm	19 - 20cm	20 - 22cm	22 - 23cm	19 - 20cm	20 - 22cm	22 - 23cm	19 - 20cm	23 - 24cm	25 - 27cm	23 - 24cm	25.5 - 26.5cm	28 - 29cm	23 - 25cm
WEIGHT	39 - 41kg	41 - 54kg	54 - 64kg	64 - 73kg	73 - 85kg	41 - 59kg	59 - 73kg	73 - 85kg	41 - 73kg	75 - 100kg	100 - 120kg	81 - 100kgs	100 - 118kg	118 - 136kg	82 - 118kg



Dreamgirl 2024/2025  
 Fall/ Holiday/ Valentine's Collection  
 9.25" x 9.75", 23.5cm x 24.7cm  
 100 pages  
 Item: 2024-F1  
 \$10:00



# 2024/2025 FHV Collection Guide

You can now order, check inventory & get status updates 24 hours a day, 7 days a week. Log into [dgorders.com](http://dgorders.com) today!

FLAT PACK	STYLE	COLOR	SIZE	PAGE
	0001	Black, Espresso, Nude, White	O/S	91
	0001X	Black, Espresso, Nude, White	O/S Queen	91
	0001N	Hot Pink	O/S	92
	0001NX	Hot Pink	O/S Queen	92
	0005	Black, Espresso, Nude, Red, White	O/S	90
	0005X	Black, Espresso, Nude, Red, White	O/S Queen	90
	0005N	Neon Pink	O/S	92
	0005NX	Neon Pink	O/S Queen	92
	0006	Black, Red	O/S	90
	0006X	Black, Red	O/S Queen	90
	0007	Black, Espresso, Hot Pink, Nude, Red, White	O/S	89
	0007X	Black, Espresso, Hot Pink, Nude, Red, White	O/S Queen	89
	0010	Black, Neon Pink	O/S	86
	0013	Black, Red, White	O/S	87
	0013X	Black, Red, White	O/S Queen	87
	0026	Black/Red	O/S	90
	0035	Black, Red	O/S	82
	0035X	Black, Red	O/S Queen	82
	0082	Black	O/S	87
	0082X	Black	O/S Queen	87
	0192	Black, Nude	O/S	91
	0192X	Black, Nude	O/S Queen	91
	0215	Black	O/S	91
	0250	Black	O/S	87
	0268	Black, Lipstick Red	O/S	82
	0268X	Black	O/S Queen	82
	0277	Black	O/S	92
	0338	Espresso/Black, Nude/Black, Nude/Hot Pink, Nude/White	O/S	89
	0347	Black	O/S	88
	0347X	Black	O/S Queen	88
	0365	Black	O/S	92
	0365X	Black	O/S Queen	92
	0367	Black	O/S	87
	0367X	Black	O/S Queen	87
	0416	Azalea	O/S	81
	0416X	Azalea	O/S Queen	81
	0417	Burgundy	O/S	83
	0420	Black	O/S	84
	0420X	Black	O/S Queen	84
	0423	Black	O/S	83
	0432	Leopard/Black	O/S	88
	0432X	Leopard/Black	O/S Queen	88
	0433	Black	O/S	88
	0436	Black	O/S	86
	0436X	Black	O/S Queen	86
	0485	Beet	O/S	80
	0485X	Beet	O/S Queen	80
	0486	Denim	O/S	85
	0486X	Denim	O/S Queen	85
	<b>0487</b>	<b>Ox Blood</b>	O/S	68
	<b>0487X</b>	<b>Ox Blood</b>	O/S Queen	68
	0492	Black	O/S	88
	0492X	Black	O/S Queen	88
	0496	Nude/Black	O/S	86
	0503	Espresso, Nude	O/S	86
	<b>0509</b>	<b>Rose Quartz</b>	O/S	71
	<b>0511</b>	<b>Black</b>	O/S	65
	<b>0512</b>	<b>Twilight</b>	O/S	67
	<b>0514</b>	<b>Black</b>	O/S	69
	1375	Black, Hot Pink, Red, Turquoise	S, M, L, XL	79
	1377	Hot Pink/Black, Red/Black	S, M, L, XL	78
	1442	Black, Red, White	S, M, L, XL	78
	1442X	Black, Red, White	1X, 2X, 3X	78
	1468	Black, Red	S, M, L, XL	78
	1468X	Black, Red	1X, 2X, 3X	78
	1478	Black, Ruby	S, M, L, XL	79

**Styles in BOLD are New Styles.** Prices are subject to change. Actual packaging graphics may vary.

\*Flat Pack styles are intended to be displayed on hangers; not included.



# 2024/2025 FHV Collection Guide

You can now order, check inventory & get status updates 24 hours a day, 7 days a week. Log into [dorders.com](http://dorders.com) today!

FLAT PACK	STYLE	COLOR	SIZE	PAGE
	1489	Black	S/M, L/XL	79
	1489X	Black	1X/2X, 3X/4X	79
	1492	Black	S, M, L, XL	78
	1492X	Black	1X, 2X, 3X	78
	1497	Beet	S/M, L/XL	79
	7030	Black, White	O/S	93
	7030X	Black, White	O/S Queen	93
	7031	Black, Red, White	O/S	93
	7034	Black	O/S	93
	8694	Black, Red	O/S	72
*	10102	Midnight, Mulberry	S, M, L, XL	36
*	10102X	Mulberry	1X, 2X, 3X	36
*	10460	Garnet	S, M, L, XL	32
*	10460X	Garnet	1X, 2X, 3X	32
	10551	Garnet	O/S	72
	10561	Lipstick Red	O/S	72
*	10996	Black, Rouge, Vintage Rose	S, M, L, XL	33
*	10996X	Black, Rouge, Vintage Rose	1X, 2X, 3X	33
*	11020	Plum	S, M, L, XL	34
*	11020X	Plum	1X, 2X, 3X	34
*	11025	Black	XS, S, M, L, XL	41
	11513	Pink Champagne	O/S	74
	11513X	Pink Champagne	O/S Queen	74
	11776	Garnet	O/S	73
	11776X	Garnet	O/S Queen	73
*	11815	Eggplant	S, M, L, XL	35
*	12239	Black, Plum, Rouge	S, M, L, XL	44
*	12239X	Black, Plum, Rouge	1X, 2X, 3X	44
*	12378	Eggplant, Garnet	S, M, L, XL	34
*	12378X	Eggplant, Garnet	1X, 2X, 3X	34
*	12426	Nocturnal	S, M, L, XL	39
*	12426X	Nocturnal	1X, 2X, 3X	39
*	12428	Eggplant	S, M, L, XL	39
*	12430	Nocturnal	S, M, L, XL	39
*	12467	Plum	S, M, L, XL	35
*	12467X	Plum	1X, 2X, 3X	35
*	12651	Black	S, M, L, XL	41
*	12763	Nocturnal	S, M, L, XL	38
*	12763X	Nocturnal	1X, 2X, 3X	38
*	12765	Black	S, M, L, XL	41
*	12769	Burgundy	S, M, L, XL	30
*	12769X	Burgundy	1X, 2X, 3X	30
*	12770	Black	S, M, L, XL	40
*	12770X	Black	1X, 2X, 3X	40
*	12788	Burgundy	S, M, L, XL	45
*	12788X	Burgundy	1X, 2X, 3X	45
	12809	Burgundy	O/S	73
	12809X	Burgundy	O/S Queen	73
	12922	Nocturnal	O/S	77
	12922X	Nocturnal	O/S Queen	77
*	13197	Black	S, M, L, XL	41
*	13198	Black	S, M, L, XL	42
*	13198X	Black	1X, 2X, 3X	42
*	13200	Ox Blood	S, M, L, XL	31
*	13200X	Ox Blood	1X, 2X, 3X	31
*	13205	Black/Red	S, M, L, XL	36
*	13205X	Black/Red	1X, 2X, 3X	36
*	13213	Leopard	S, M, L, XL	37
*	13213X	Leopard	1X, 2X, 3X	37
*	13214	Leopard	S, M, L, XL	37
*	13216	Beet	S, M, L, XL	29
*	13217	Beet	S, M, L, XL	29
*	13219	Copper	S, M, L, XL	37
*	13220	Charcoal	S, M, L, XL	28
*	13220X	Charcoal	1X, 2X, 3X	28
*	13224	Denim	S, M, L, XL	38

**Styles in BOLD are New Styles.** Prices are subject to change. Actual packaging graphics may vary.

\*Flat Pack styles are intended to be displayed on hangers; not included.



# 2024/2025 FHV Collection Guide

You can now order, check inventory & get status updates 24 hours a day, 7 days a week. Log into [dorders.com](https://dorders.com) today!

FLAT PACK	STYLE	COLOR	SIZE	PAGE
*	13225	Denim	S, M, L, XL	38
*	13231	Red Rose	S, M, L, XL	30
*	13240	Rose Quartz	S, M, L, XL	28
*	13249	Rose Quartz	S, M, L, XL	45
*	13251	Leopard/Rose	S, M, L, XL	44
*	13251X	Leopard/Rose	1X, 2X, 3X	44
	13266	Black	O/S	75
	13267	Leopard	O/S	75
	13275	Beet	O/S	76
	13277	Denim	O/S	77
	13279	Rose Quartz	O/S	74
	13279X	Rose Quartz	O/S Queen	74
	13283	Beet	O/S	76
	13283X	Beet	O/S Queen	76
	13285	Black	O/S	75
	13286	Leopard	O/S	75
*	13316	Rose Quartz	S/M, L/XL	29
*	13376	Black	S, M, L, XL	43
*	13377	Black	S, M, L, XL	43
*	13377X	Black	1X, 2X, 3X	43
*	13378	Ox Blood	S, M, L, XL	31
*	<b>13416</b>	<b>Black, Ox Blood</b>	S, M, L, XL	17
*	<b>13416X</b>	<b>Black</b>	1X, 2X	17
*	<b>13482</b>	<b>Black</b>	S, M, L, XL	9
*	<b>13483</b>	<b>Poinsettia</b>	S, M, L, XL	18
*	<b>13483X</b>	<b>Poinsettia</b>	1X, 2X, 3X	18
*	<b>13484</b>	<b>Black</b>	S, M, L, XL	10
*	<b>13485</b>	<b>Black</b>	S, M, L, XL	11
*	<b>13485X</b>	<b>Black</b>	1X, 2X, 3X	11
*	<b>13487</b>	<b>Ivy</b>	S, M, L, XL	5
*	<b>13487X</b>	<b>Ivy</b>	1X, 2X, 3X	5
*	<b>13490</b>	<b>Ivy</b>	S, M, L, XL	7
*	<b>13492</b>	<b>Twilight</b>	S, M, L, XL	4
*	<b>13493</b>	<b>Ox Blood</b>	S, M, L, XL	15
*	<b>13497</b>	<b>Twilight</b>	S, M, L, XL	3
*	<b>13498</b>	<b>Black</b>	S, M, L, XL	13
*	<b>13498X</b>	<b>Black</b>	1X, 2X, 3X	13
*	<b>13499</b>	<b>Poinsettia</b>	S, M, L, XL	23
*	<b>13499X</b>	<b>Poinsettia</b>	1X, 2X, 3X	23
*	<b>13501</b>	<b>Rose Quartz</b>	S, M, L, XL	25
*	<b>13502</b>	<b>Rose Quartz</b>	S, M, L, XL	27
*	<b>13502X</b>	<b>Rose Quartz</b>	1X, 2X, 3X	27
*	<b>13508</b>	<b>Poinsettia</b>	S, M, L, XL	21
*	<b>13508X</b>	<b>Poinsettia</b>	1X, 2X, 3X	21
	13511	Black	O/S	51
	13514	Ox Blood	O/S	47
	13515	Twilight	O/S	53
	13517	Ox Blood	O/S	48
	13517X	Ox Blood	O/S Queen	48
	13518	Poinsettia	O/S	55
	13518X	Poinsettia	O/S Queen	55
	13520	Black	O/S	49
	13520X	Black	O/S Queen	49
	13522	Twilight	O/S	52
	13522X	Twilight	O/S Queen	52
	13523	Poinsettia	O/S	59
	13524	Poinsettia	O/S	57
	13524X	Poinsettia	O/S Queen	57
	13525	Rose Quartz	O/S	61
	13525X	Rose Quartz	O/S Queen	61
	13527	Poinsettia	O/S	58
	13530	"North Pole Hottie"	O/S	63
	13530X	"North Pole Hottie"	O/S Queen	63
*	13532	Poinsettia	S, M, L, XL	19
*	13532X	Poinsettia	1X, 2X, 3X	19



This symbol represents our hanging styles that will now be shipped in a poly bag. Hangers are not included.



This symbol represents Dreamgirl's packaged Lingerie & Bedroom Costume Collection which features front and back views of each style.



This symbol represents Dreamgirl's packaged Hosiery Collection, which features front and back views of each style.



This symbol represents Dreamgirl's packaged Thong and Panty Collection, which features front and back views of each style.



This symbol represents Dreamgirl's stocking collection styles in a sleeve insert with front views in a clear package hook for easy hanging and display.



Styles in **BOLD** are New Styles. Prices are subject to change. Actual packaging graphics may vary.

\*Flat Pack styles are intended to be displayed on hangers; not included.





STYLE 13485X





Dreamgirl

The images and graphics in this catalogue [or CD] are the copyright-protected work of Dreamgirl Brands. Any use or reproduction without the express written consent of Dreamgirl Brands is strictly prohibited. Violators will be prosecuted to the fullest extent of the law.

COPYRIGHT © MMXXIII